



LIMITED EDITION COLLECTION



REGENT LIMITED

DIMENSIONS

Width:	84 in.
Length:	90 in.
Height:	38 in.
Average Fill:	425 gals.
Dry Weight:	750 lbs.
Average Full Weight:	4297 lbs.
Seating Capacity:	6 people
Power Pack:	220V/50A
Total Pumps:	3
Total Jets:	54

Domestic

PERFORMANCE TUNE RATING

GPM Flow	480
----------	-----

EQUIPMENT

- Toploading Antimicrobial Filtration
- Treaded Footwell
- Footwell Spa Drain
- Sealed Base Including Slide Rails
- Saratoga Lighting™ System
- Relax Stream™ Water Feature
- Slide Valves
- (2) Two Speed Jet Pumps
- Continuous Circulation™ System
- Multi Zone™ Ozone
- 7/3/2 Warranty

FEATURES

- Thermal Bond™ Wrap Insulation
- Stainless Steel Jet Accents
- CFE Hydrotherapy
- Multi Clean™ System
- Multi Weather™ Cabinet
- RotoStream™ Manual Sequencing Therapy
- Slide Rail Base
- Shell Trim Design

OPTIONS

- Saratoga Sounds™ Audio System
- Thermal Bond™ Full Foam Insulation



OLYMPIA LIMITED



DIMENSIONS

Width:	84 in.
Length:	84 in.
Height:	38 in.
Average Fill:	375 gals.
Dry Weight:	750 lbs.
Average Full Weight:	3880 lbs.
Seating Capacity:	5-6 people
Power Pack:	220V/50A
Total Pumps:	3
Total Jets:	43

Domestic

PERFORMANCE TUNE RATING

GPM Flow	390
----------	-----

EQUIPMENT

- Toploading Antimicrobial Filtration
- Treaded Footwell
- Footwell Spa Drain
- Sealed Base Including Slide Rails
- Saratoga Lighting™ System
- Relax Stream™ Water Feature
- Slide Valves
- (2) Two Speed Jet Pumps
- Continuous Circulation™ System
- Multi Zone™ Ozone
- 7/3/2 Warranty

FEATURES

- Thermal Bond™ Wrap Insulation
- Stainless Steel Jet Accents
- CFE Hydrotherapy
- Multi Clean™ System
- Multi Weather™ Cabinet
- Slide Rail Base
- Shell Trim Design

OPTIONS

- Saratoga Sounds™ Audio System
- Thermal Bond™ Full Foam Insulation



TALBOT LIMITED



DIMENSIONS

Width:	80 in.
Length:	84 in.
Height:	36 in.
Average Fill:	350 gals.
Dry Weight:	700 lbs.
Average Full Weight:	3622 lbs.
Seating Capacity:	6 people
Power Pack:	220V/50A
Total Pumps:	2
Total Jets:	37

Domestic

PERFORMANCE TUNE RATING

GPM Flow	390
----------	-----

EQUIPMENT

- Toploading Antimicrobial Filtration
- Treaded Footwell
- Footwell Spa Drain
- Sealed Base Including Slide Rails
- Saratoga Lighting™ System
- Relax Stream™ Water Feature
- Slide Valves
- (2) Two Speed Jet Pumps
- Custom Circulation System
- Multi Zone™ Ozone
- 7/3/2 Warranty

FEATURES

- Thermal Bond™ Wrap Insulation
- Stainless Steel Jet Accents
- CFE Hydrotherapy
- Multi Clean™ System
- Multi Weather™ Cabinet
- Slide Rail Base
- Shell Trim Design

OPTIONS

- Saratoga Sounds™ Audio System
- Thermal Bond™ Full Foam Insulation



PALMER LIMITED

DIMENSIONS

Domestic

Width:	80 in.
Length:	84 in.
Height:	36 in.
Average Fill:	350 gals.
Dry Weight:	700 lbs.
Average Full Weight:	3622 lbs.
Seating Capacity:	6 people
Power Pack:	220V/50A
Total Pumps:	2
Total Jets:	41

PERFORMANCE TUNE RATING

GPM Flow	390
----------	-----

EQUIPMENT

- Toploading Antimicrobial Filtration
- Treaded Footwell
- Footwell Spa Drain
- Sealed Base Including Slide Rails
- Saratoga Lighting™ System
- Relax Stream™ Water Feature
- Slide Valves
- (2) Two Speed Jet Pumps
- Custom Circulation System
- Multi Zone™ Ozone
- 7/3/2 Warranty

FEATURES

- Thermal Bond™ Wrap Insulation
- Stainless Steel Jet Accents
- CFE Hydrotherapy
- Multi Clean™ System
- Multi Weather™ Cabinet
- Slide Rail Base
- Shell Trim Design

OPTIONS

- Saratoga Sounds™ Audio System
- Thermal Bond™ Full Foam Insulation



LIMITED EDITION PERFORMANCE SYSTEM

Direct Impact Therapy

VERSA-FLO™ HYDROTHERAPY SYSTEM

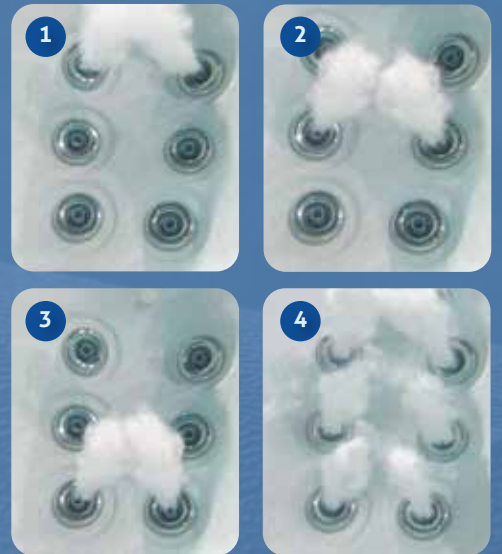
The Versa-Flo™ Therapy System represents the Direct Impact™ Therapy operation of the Limited Edition™ Spa Line. This is in contrast of the CFE system's passive relief therapy. This Direct Impact™ Hydrotherapy System gives relief by Versa-Flo jetting moving direct pressure therapy right where your body needs it, regardless of the muscle size or location. Versa-Flo™ provides the versatility to create a different relief point on multiple body locations.



ROTO STREAM® SEQUENCING SYSTEM

The patented Roto Stream® Sequencing System provides the spa user an automated massage experience, sequencing hydrotherapy automatically through the illustrated positions 1-4, while allowing the spa user to either control the speed of the experience or isolate a specific location any time during the massage.

*Regent Limited Only



LIMITED EDITION™ STAINLESS JET ACCENTS

These jets use a stainless steel accent to create a designer look that adds a classic finish to our limited series.



Saratoga Spa® is the only brand of spas with two independent therapy systems!

Passive Impact Therapy



CFE™ HYDROTHERAPY SYSTEM

The Saratoga Spa Company® invented and patented the C.F.E.™ (Coplanar Fluid Ejector), a hydrotherapy jet that moves a stream of water parallel to the body. The original C.F.E.™ jet has now been expanded into a complete hydrotherapy system we call Power Massage®.



POWER MASSAGE®

A unique system which provides tension relief along the curves and angles of your body. Specially designed contours in the spa shell guide powerful, therapeutic water ribbons down the neck and back area and along the full length of your spine. These patented jets are concealed by the Saratoga Spa® head rests and offer a revitalizing experience truly unique in the spa world.

*POWER MASSAGE PLUS®

Combining two hydrotherapy jets in one behind the headrest with a small custom valve, your Saratoga Spa® is able to isolate the back, neck and shoulders at the ideal angle.



*POWER STREAM®

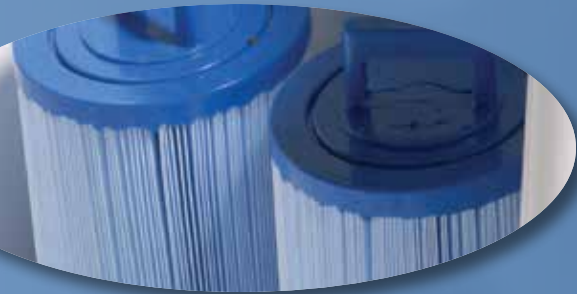
Saratoga Spas® combine the parallel movement of air and water in the Power Stream® providing a relaxing, therapeutic ribbon of massage for the hand, wrist, arm, and feet.

*Power Massage Plus® and Power Stream® only available on Regent

MULTI CLEAN™ SYSTEM

Always clean, always warm, always inviting.

The Multi Clean™ System is customizable allowing proper circulation in combination with cleansing Antimicrobial Filtration, providing spa water that is maintained efficiently and effectively.



ANTIMICROBIAL FILTRATION

The Antimicrobial Filtration is designed to inhibit odor, mold and mildew on the surface of the filter cartridge. The Multi Zone™ system is designed to circulate water through these Antimicrobial cartridges. This will ensure your spa water has been properly filtered.



MULTI ZONE™ OZONE READY

Optional environmentally friendly Ozone, a natural sanitizer, will help in providing a better soaking atmosphere in your spa water. Limited Edition™ Hot Tubs come Ozone ready.



CUSTOM CIRCULATION SYSTEM

Our Palmer and Talbot Limited Edition™ Hot Tubs have Customizable Circulation Cycles designed for your lifestyle. This system can circulate and filter thousands of gallons of water using up to four different circulation cycles.



CONTINUOUS CIRCULATION™ SYSTEM

Our Regent and Olympia Limited Edition™ Hot Tubs use a dedicated 35 GPM pump to provide continuous water circulation while maintaining cost-efficiency. This Continuous Circulation™ system moves over 50,000 gallons of water per day.

LIMITED EDITION™ OPERATION SYSTEM



- Lifestyle Programming
- Troubleshooting
- Automated Time Outs



SARATOGA LIGHTING™ SYSTEM

Illuminating your spa experience, bathed in the soft LED glow of multiple color combinations, the Limited Edition™ Lighting System is designed to be uniquely captivating.



RELAX STREAM™ WATER FEATURE

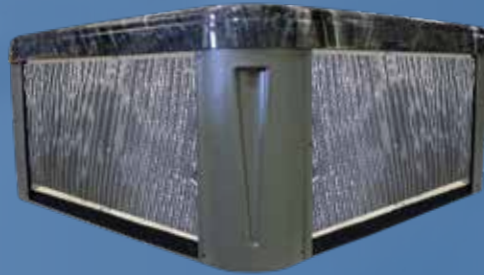
Whether your spas enhanced atmosphere is activated by the Relax Stream™ Water Feature cascading down or the Laminar Jets sending forth rainbow fountains of color, this experience will be your warm water escape.



SARATOGA SOUNDS™ AUDIO SYSTEM

Enjoy music in the comfort of your spa with a variety of optional stereo upgrades. The Saratoga Sounds™ audio system includes Bluetooth Streaming Audio Panel, Dual Speakers and subwoofer to fully immerse you in Saratoga Sounds™!

THERMAL BOND™ INSULATION SYSTEM



The Thermal Bond™ Wrap Insulation System is standard on all Limited Edition™ Hot Tubs and utilizes three key components in providing efficient heat retention and lower operating costs.

First and foremost is the spa cover that seals in the heat from the top. Secondly we use the Thermal Bond™ Wrap Insulation to retain warm air that is created inside the spa cabinet. Thirdly, the Thermal Bond™ Wrap sealed base helps keep warm air in and cold air out of the bottom of the spa cabinet. These three components allow you to be soaking in a spa that is designed to be ready when you are!

THERMAL BOND™ FULL FOAM



Thermal Bond™ Full Foam is designed as an optional upgrade insulation. This system provides a higher level of heat retention inside the spa cabinet. Ask your Dealer about model availability.

MULTI WEATHER™ EXTERIOR



The Multi Weather™ exterior is designed as a low maintenance and durable product. It is designed for easy care while continuing to look great for years to come.

HORSEPOWER VS. PERFORMANCE TUNED

HORSEPOWER • noun

1. A foot-pound-second unit of power, equivalent to 550 foot-pounds per second, or 745.7 watts.
2. Informal. The capacity to achieve or produce; strength or talent.

How is this relevant to your spa purchase?

Well quite frankly, it isn't.



Our engineers have a Performance Tune Rating for each model based on its components, not a flat, general pump rating. This provides clearer information regarding the actual performance of a Limited Edition Spa® based on jet style, as well as the number of jets and pumps.

Performance Tuned Jet Placement is the true balance of GPM (Gallons Per Minute) and PSI (Pounds per Square Inch) involved in the therapy benefit of your spa.

True measures of an individual spa's performance can be found in the model specification sheet.



YOUR AUTHORIZED LIMITED EDITION DEALER IS:

All sizes are approximate. Saratoga Spa and Bath® Co., Inc reserves the right to make changes in product characteristics, standard equipment supplied or available at any time without notice. Not all features are available on all models. International 50 Hz models may vary in specifications and features. Models with international specifications are only available through international distributors. All spas must be wired in compliance with owners manual. Power Massage® is a patented feature of Saratoga Spa and Bath® Co., Inc (4953240) (5086595) (5752300) (6351856) (6185757) (6182303) (D431303) (5067228) (5010699) (CFE#4860392) (6182303) Entertainment systems and other optional features are not offered with the UL® listing or standard warranty and are not available on all models. See your Saratoga Spa® dealer for details.

WARNING: The consumer product safety commission has stated that water temperature in a spa or hot tub should not exceed 104° F. Immersion in water in excess of 104° could be hazardous to your health. Children, aged persons, persons having medical problems and pregnant women should consult their physicians before using a spa or hot tub. Spas or hot tubs should not be used by persons under the influence of alcohol or by persons taking medications that cause drowsiness.

Limited Edition Spas are a product of
SARATOGA SPA® COMPANY

33 Wade Road, Latham, NY 12110
Telephone 518-786-1111

Visit us on-line at www.saratogaspas.com

